

Filter Pack

This collection contains the following effects.

Image Processing:

Detail Smoothing, Color Filter, Color Blotches, Circle Blur, Direction Blur 2, Radial Blur, Shining, Out of Focus 2, Blurry Spots, Newspaper Image

Detail Smoothing



This filter smoothes/cleans areas of image noise whilst preserving sharpness. The resulting scene acquires an artistic touch.

Strength: Strength of the color contrast which should be smoothed. 1= low contrast 15 = high contrast

Mode: Direction in which the effect should be faded

Fade Time: Duration of fade time.

Fade time of 000.00:00 will render the effect for the whole effect time.

Color Filter



This filter adds color filters or glow effects to the scene. It is particularly suitable for producing a "romantic", soft-focus look by means of an out-of-focus glow effect. Select from a number of default settings. This effect can be used to particular effect in wedding and event videos.

Presets: Function of the chosen filter

Mode: Direction in which the effect should be faded

Fade Time: Duration of fade time.

Fade time of 000.00:00 will render the effect for the whole effect time.

Color Blotches



This filter lends the scene the style of an impressionist painting, and is particularly effective for stills - best viewing on still scenes.

Strength: Set the dimension of the color dots

Scene: It will be the first frame only (with the length of the effekt) or all frames rendered.

Mode: Direction in which the effect should be faded
Fade Time: Duration of fade time.
Fade time of 000.00:00 will render the effect for the whole effect time.

Circle Blur



This filter computes a circular out-of-focus area around a freely definable circular image area. It is particularly suitable for enhancing the dynamic effect of an image or for drawing the eye to a particular image area.

Position: Define the position and dimension of the not changed range

Strength: Strength of circle blur. (the bigger the strength, the blurrier the area)

Mode: Direction in which the effect should be faded

Fade Time: Duration of fade time.

Fade time of 000.00:00 will render the effect for the whole effect time.

Direction Blur 2



This filter enables the scene to be distorted in a desired direction. The level of out-of-focus can also be selected.

Direction: Degree of quality in which the scene should be distorted 0° = vertical, 90° = horizontal

Strength: The strength of the direction blur

Mode: Direction in which the effect should be faded

Fade Time: Duration of fade time.

Fade time of 000.00:00 will render the effect for the whole effect time.

Radial Blur



This filter computes a radiant out-of-focus region around a freely definable circular area. The effect is similar to that of the Circle Blur filter.

Position: Define the position and dimension of the unchanged area

Strength: Strength of radial blur. (the higher the strength, the blurrier the effect)

Mode: Direction in which the effect should be faded

Fade Time: Duration of fade time.

Fade time of 000.00:00 will render the effect for the whole effect time.

Shining



This filter enables either the light or dark areas of the image to be amplified (shining effect). The filter lends the image a particular luminous quality. The effect can be used to add an artistic touch.

Strength: Strength of the amplification

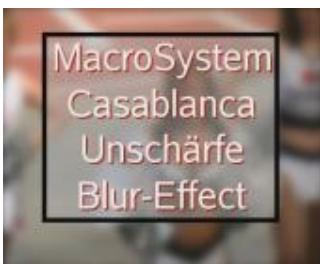
Type: Color value which will be followed

Mode: Direction in which the effect should be faded

Fade Time: Duration of fade time.

Fade time of 000.00:00 will render the effect for the whole effect time.

Out of Focus 2



This filter enables a horizontal and/or vertical blur effect to be selected for the scene. Apply a configurable and dissolvable out-of-focus effect to a video scene. Any titles and text panels subsequently added will be enhanced.

Hor. Strength: Set the horizontal blur.

Vert. Strength: Set the vertical blur.

Mode: Direction in which the effect should be faded
Fade Time: Duration of fade time.
Fade time of 000.00:00 will render the effect for the whole effect time.

Blurry Spots



This filter renders the light or dark image areas as patches of color with blur at their extremities, thereby integrating them harmoniously into the image as a whole. The effect can be used to add an artistic touch.

Strength: The blurry dimension of the extremities by the patches of color

Type: color value which will be followed

Mode: Direction in which the effect should be faded

Fade Time: Duration of fade time.

Fade time of 000.00:00 will render the effect for the whole effect time.

Newspaper Image



This filter resolves the scene into a dot pattern, similar in appearance to that of an enlarged newspaper picture. The scene can be computed in black & white or in color, as desired.

Mode: The scene can keep his color or changed into black and white.

Strength: Strength of the dots

www.macrosystem.de

Software requirements:
SMART EDIT 2.5, 3.0, 4.0